

Interession Dates & Fees*

2011 – 2012	7:45 am – 6:00 pm
Sept. 5 th	CLOSED
Oct. 10 th	CLOSED
Oct. 31 st	\$40
Nov. 11 th	CLOSED
Nov. 21 st – 23 rd	\$120
Dec. 19 th – 22 nd	\$160
Dec. 23 rd	CLOSED
Dec. 26 th – 29 th	\$160
Dec. 30 th	CLOSED
Jan. 2 nd – 6 th	\$200
Jan. 16 th	CLOSED
Feb. 20 th	CLOSED
Apr. 2 nd – 6 th	\$200
May 28 th	CLOSED

Monthly Extended Day Program Fees*

(*Please add annual \$20 Registration fee per child)

Month	After School Care FULL TIME 4-5 days/Wk 2:30pm – 6:00pm	After School Care PART TIME 2-3 days/Wk 2:30pm – 6:00pm
	August	\$288
September	\$320	\$192
October	\$320	\$192
November	\$320	\$192
December	\$160	\$96
January	\$240	\$144
February	\$400	\$240
March	\$320	\$192
April	\$240	\$144
May & June	\$368	\$240

Costs:

After reviewing numerous After School Care programs, we have come up with a pricing structure that is below the average, while maintaining a higher quality of care that is typically provided by commercial providers.

**On minimum days, regular enrollees in DMCS Extended Day Program will receive additional care at no additional cost!*

Enrollment Priority/Space:

Enrollment priority will be given as follows:

1. Children enrolling in Full Time care (4-5 days/week), monthly billing at approx. \$80/week.
 2. Children enrolling in Part Time care (2-3 days/week), monthly billing at approx. \$48/week.
 3. Care hours purchased on a "Punch Card", at \$7/hour to be paid per child.(In 20 hour increments)
 4. Drop-In care at \$12/hour. Payment is due upon pick up each visit.
 5. Intersession days (Oct. – Apr.), billed at \$40/day.
- Enrollment in EDP is limited by availability of facilities and staff. EDP reserves the right to accept or deny enrollment in the program based on space/staff availability.

EDP Days of Operation:

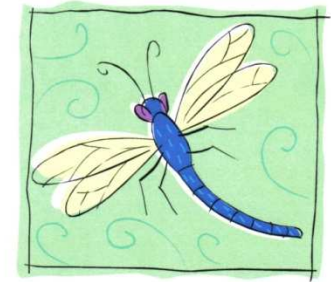
Please see the EDP calendar for exact days that the Daily & Intersession Program is available.

Sample EDP Daily Schedule:

- 2:30 PM - 3:30 PM Supervised play/snack time
- 3:30 PM - 4:30 PM Homework Club/quiet reading
- 4:30 PM - 5:30 PM Organized activities and projects
- 5:30 PM - 6:00 PM Clean-up/prepare for departure

EDP Intersession Schedule:

Each intersession week will be organized around a thematic unit of study or activity. These units may include arts & crafts, cooking, gardening, science & nature, sports, drama, etc. For specific details of each week's offerings, see the Program Coordinator.



**2011 - 2012
Dixon Montessori
Charter School**

**Extended Day Program
&
Intersession Care**

General Information:

DMCS Extended Day and Intersession Care Programs are an optional addition to the regular school day. This quality option is an integral part of a complete education for many families.

Because of DMCS's commitment to providing the highest quality Montessori education possible to its students, we have thoughtfully designed EDP to offer a comprehensive After School and Intersession Program for DMCS students. Recognizing the importance of quality and consistency, we offer the following:

- Seamless transition of care
- Organized daily activities
- Daily Homework Club
- Competitive pricing
- Convenient location

We believe that EDP is the best answer for many of today's busy families. If your child is enrolled in DMCS and you are interested in enrolling your child in EDP, complete the Contract and Sign-Up Sheet. Return them to the school office as soon as possible. Every effort will be made to accommodate all interested students, however space may be limited based on availability of staff and facilities.



Availability:

EDP is offered exclusively to students enrolled in the Dixon Montessori Charter School. Space may be limited, so please sign up early to assure a spot for your child. Contracts are available from the EDP Coordinator, at the school office and on our web site at www.DixonMontessori.org. Availability may vary, so please check with the EDP Coordinator.

Location:

The Extended Day and Intersession Care Programs will be provided on the DMCS campus. We believe that keeping a child in the same safe, familiar environment where s/he spends his/her school day is beneficial to his/her mental and emotional wellbeing.

Food & Snacks:

Students participating in the EDP will be provided with a healthy snack each afternoon.

On Minimum Days (12:15pm School release) EDP students are to bring a lunch from home. Afternoon snack will still be provided by the Program.

Students using our Intersession Care Program will receive both lunch and an afternoon snack while in the program. During intersession, children attending during the morning hours should have a healthy breakfast prior to their arrival.

For children with food allergies, parents may choose to provide healthy packed meals for their child(ren).



Early Drop-Off & Late Pick-Up:

Our EDP staff is on-site from the end of the school day to 6:00 PM, Monday - Friday. For Intersession Care, children may be dropped off no earlier than 7:45 AM and must be picked up by 6:00 PM. Out of consideration for our staff and their families; we ask for your cooperation in adhering to this schedule. Late pick-ups (after 6:00 PM) will be billed at a rate of \$1.00 per minute and such fees are due at time of pickup.

Payment Options:

Monthly fees are to be pre-paid no later than the **1st working day** of the month that EDP services are needed. All payments are to be made in person at the school office (**not mailed**). Fees not paid by the **10th** of the month will result in a \$15 late fee. Fees not paid in full by the **15th** of the month will result in cancellation of EDP enrollment.

Changes in contracts may be made only on the first day of the month and the annual contract may be changed only once. No credits will be given for early pick-ups, late drop-offs, absences, illnesses, holidays, vacations, or emergency closures.