

# AHERA Triennial Reinspection Report

*Prepared for:*



## **Dixon Montessori Charter School**

355 N Almond St, Dixon,  
CA 95620

## **Dixon Unified School District**



*Presented to:*

**Mr. Marc Monachello**  
Technology Director  
Dixon Unified School District  
180 South First Street, Suite 7  
Dixon, CA 95620

*Prepared by:*



**December 20, 2020**

**Project No. A2886**



2199 Norse Drive, Suite B, Pleasant Hill, CA 94523  
Phone (925) 689-2174 • Fax (855) 710-6294

December 20, 2020

Project No. A2886

Mr. Marc Monachello  
Technology Director  
Dixon Unified School District  
180 South First Street, Suite 7  
Dixon, CA 95620

**Re: AHERA Triennial Reinspection Report – Dixon Montessori Charter School  
Recommended Response Actions Based on AHERA Risk Assessment**

Dear Mr. Monachello,

This report summarizes the findings of Aurora Environmental Services, Inc.'s (Aurora ESI) Asbestos Hazard Emergency Response Act (AHERA) Triennial Reinspection at Dixon Unified School District's (DUSD) Dixon Montessori Charter School located in Dixon, California. This reinspection assessment was conducted on October 12, 2020. The purpose of the AHERA Triennial Reinspection is to reinspect (visually), reassess, and touch all known asbestos containing building material (ACBM) and/or assumed ACBM to determine whether it has become friable since last the last assessment, which was conducted by Aurora ESI in 2017.

## **1. REINSPECTION METHODOLOGY**

The reinspection was conducted by Mr. Richard Casey, a CAL/OSHA registered Certified Site Surveillance Technician (CSST, DOSH Certificate No. 99-2567). Each room and area of the school was accessed. Building materials that were suspected to contain asbestos were identified, inventoried, and assessed. The assessment consisted of classifying the type of building material (i.e., thermal system insulation, surfacing, or miscellaneous), determining whether the material was friable or nonfriable, estimating quantity of the material, and conducting a risk assessment for each friable material. This information was recorded for each room / area accessed and is provided in the attached tables. No bulk samples were collected or submitted for analysis; all building materials identified and suspected to contain asbestos were assumed to be ACBM.

There are seven (7) AHERA Risk Assessment Categories, per 40 CFR 763.88, each is listed below. There are corresponding Response Action options for each risk assessment category, as detailed in 40 CFR 763.90.

1. Damaged or Significantly Damaged TSI ACBM
2. Damaged Friable Surfacing ACBM
3. Significantly Damaged Friable Surfacing Material ACBM
4. Damaged or Significantly Damaged Friable Miscellaneous ACBM
5. Friable ACBM with Potential for Damage
6. Friable ACBM with Potential for Significant Damage
7. Any Other Friable ACBM or Suspect ACBM

## 2. RESPONSE ACTIONS

Damaged, nonfriable ACBMs do not require a categorical AHERA assessment or associated response action. However, Aurora ESI recommends that DUSD repair all damaged, nonfriable ACBMs in accordance with their Operations and Maintenance (O&M) Plan to reduce the possibility of the ACBM becoming friable due to continued degradation / damage.

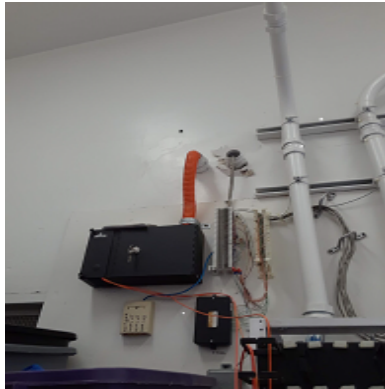
Repair of damaged ACBM less than three square feet or three linear feet is considered small-scale, short-duration repairs and may be performed by DUSD's O&M personnel who have a minimum of 16 hours of Asbestos O&M training for Class III work. AHERA regulations state that response actions chosen for other than small-scale, short-duration removal and repairs must be designed and conducted by persons accredited to design and conduct response actions.

Damaged ACBM greater than three square feet or linear feet should be repaired or removed by a licensed asbestos abatement contractor and final clearance air testing performed in accordance with AHERA regulations.

## 3. DAMAGED FRIABLE MATERIALS RECOMMENDATION

Damaged, friable surfacing and miscellaneous ACBMs, all of which were assumed to contain asbestos, were identified during the Triennial Reinspection of Dixon Montessori Charter School. These materials have been assessed as *damaged friable surfacing ACBMs* (i.e., Risk Assessment Category 2) and *damaged or significantly damaged friable miscellaneous ACBMs* (i.e., Risk Assessment Category 4). The response action options available are encapsulation, enclosure, removal, or repair. Based on the damage identified, Aurora ESI recommends that the materials be repaired. See the **AHERA: Triennial Reinspection Report** inspection table for specific locations and descriptions of damaged ACBMs. Photos are included for materials with significant damage.

- **Drywall & Joint Compound** – MPR Bldg: MPR & Speech Room Restroom (HM#13)
- **Drywall & Skim Coat** - Wing 15-20: Elec/Storage (HM#47)
- **Smooth Plaster** – Wing 15-20: Boys Restroom next to P.E Storage (HM#48)
- **Plaster Wall** – Office (HM#10)



Wing 15-20: Elec./Storage (HM#47)



MPR: Speech Room (HM#13)



MPR (HM#13)

#### 4. DAMAGED NONFRIABLE MATERIALS RECOMMENDATION

Damaged nonfriable miscellaneous ACBMs were identified during the Triennial Reinspection. These ACBMs do not require an AHERA assessment or associated response action. However, Aurora ESI recommends that DUSD repair these damaged ACBMs in accordance with their O&M Plan to reduce the possibility of the ACBM becoming friable as a result of continued damage or degradation. Following is a list of the damaged nonfriable ACBMs identified along with the location where damage was observed:

- 12" VFT (Mottled) & Adhesive - Portable 24 (HM#52)
- 9" VFT (Beige w/ Red) & Adhesive - Wing 5-9: Rooms 6 & 9 (HM#25)
- 9" VFT (Beige w/ Black) & Adhesive - Wing 5-9: Rooms 5, 7, & 8 (HM#26)
- 9" VFT (Red) & Adhesive - MPR Bldg: MPR & Stage (HM#8), Wing 10-14: Rooms 12 & 13 (HM#8)
- 9" VFT (Tan w/ Red) & Adhesive - Wing 1-4: Room 2 (HM#19)
- Sheet Vinyl Flooring (Tile Pattern) & Adhesive - Wing 1-4 and Restrooms (HM#21)
- 9" VFT (Red w/ White Stripe) & Adhesive - Wing 10-14: Rooms 11 & 14 (HM#33)
- 9" VFT (Maroon) & Adhesive - Wing 10-14: Room 13 (HM#36)
- 12" VFT (White w/ Dots) - Classroom 21 (HM#38)



**Wing 5-9: Rm. 7 (HM#25)**



**Wing 5-9: Rm. 7 (HM#26)**



**Wing 1-4: Staff Restroom (HM#21)**

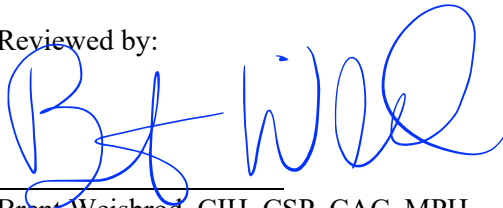


**Wing 10-14: Rm 13 (HM#36)**

In accordance with the AHERA rule, specifically 40 Code of Federal Regulations (CFR) Part 763.94 (a), a copy of this AHERA Triennial Reinspection "...shall be maintained in a centralized location in the administration office of both the school and the local education agency as part of the management plan."

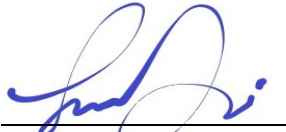
If you have any questions regarding this report, please contact Aurora ESI at 855-500-2374.

Reviewed by:



Brent Weisbrod  
Brent Weisbrod, CIH, CSP, CAC, MPH  
Cal-DOSH CAC #14-5186  
Lead Inspector Assessor #26432

Prepared by:



Jose Delgado  
Jose Delgado  
Environmental Specialist  
Certified Building Inspector



District: Dixon Unified School District  
 School Name: Dixon Montessori Charter School  
 Building(s): Office  
 Field Surveyor: Richard Casey  
 Surveillance Date: October 12, 2020

## AHERA: Triennial Reinspection Report

**Note: AHERA Reinspection has been completed in accordance with AHERA Rule 40 CFR Part 763.85(b)**

40 CFR Part 763.85 (b) requires all Asbestos Containing Building Materials and Suspect Asbestos Containing Building Materials be visually reinspected, reassessed, and touched to determine whether they have become friable since last inspection or reinspection. For each homogenous areas of newly friable material that is already assumed to be ACBM, bulk sample may be collected and submitted for analysis. A copy of the report shall be submitted to the Risk Manager for inclusion in th Asbestos Management Plan.

Legend of acronyms and terms at end of table

BUILDING AND FUNCTIONAL SPACE	HOMOGENEOUS MATERIAL NUMBER (HM#)	MATERIAL DESCRIPTION Friable (F), Nonfriable (NF), TSI (T), Surfacing (S), or Miscellaneous (M)		AHERA ASSESSMENT CATEGORY (1-7, X, None)	DATE ACBM REMOVED	COMMENTS
Workrooms 1 and 2, Entry, Nurse's Office, Director's Office	1	NF/M	12" Vinyl Floor Tile (Grey) and Adhesive (2,000 sq.ft.)	X	N/A	Assumed positive
Nurse's Restroom, Men's Staff Restroom, Women's Staff Restroom	2	NF/M	Sheet Vinyl Flooring (White) and Adhesive (500 sq.ft.)	X	N/A	Assumed positive
Throughout Building	3	NF/M	Base Cove Adhesive (300 sq.ft.)	X	N/A	Assumed positive
Throughout Building	4	F/M	Drywall and Joint Compound (4,000 sq.ft.)	5	N/A	Assumed positive
Former Director's Office, Men's Staff Restroom, Women's Staff Restroom, Workroom 2	5	F/S	Drywall - Textured (2,000 sq.ft.)	5	N/A	Assumed positive
Director's Office, Workroom 2	6	F/M	2' x 4' Ceiling Panels (500 sq.ft.)	None	N/A	Samples collected ECG 3/7/13
Reception Office, Former Director's Office, Workroom 1, Nurse's Office	7	F/M	1' x 1' Acoustic Ceiling Tile (1,500 sq.ft.)	5	N/A	Assumed positive
Counselor Office	8	NF/M	Carpet, Multicolor and Adhesive (200 sq.ft.)	X	N/A	Assumed positive





District: Dixon Unified School District  
 School Name: Dixon Montessori Charter School  
 Building(s): Office  
 Field Surveyor: Richard Casey  
 Surveillance Date: October 12, 2020

## AHERA: Triennial Reinspection Report

**Note: AHERA Reinspection has been completed in accordance with AHERA Rule 40 CFR Part 763.85(b)**

40 CFR Part 763.85 (b) requires all Asbestos Containing Building Materials and Suspect Asbestos Containing Building Materials be visually reinspected, reassessed, and touched to determine whether they have become friable since last inspection or reinspection. For each homogenous areas of newly friable material that is already assumed to be ACBM, bulk sample may be collected and submitted for analysis. A copy of the report shall be submitted to the Risk Manager for inclusion in th Asbestos Management Plan.

Legend of acronyms and terms at end of table

BUILDING AND FUNCTIONAL SPACE	HOMOGENEOUS MATERIAL NUMBER (HM#)	MATERIAL DESCRIPTION Friable (F), Nonfriable (NF), TSI (T), Surfacing (S), or Miscellaneous (M)		AHERA ASSESSMENT CATEGORY (1-7, X, None)	DATE ACBM REMOVED	COMMENTS
Reception Area	8	NF/M	Carpet, multicolor and Adhesive (250 sq.ft.)	X	N/A	Assumed positive
Vice Principal's Office and Storage Area	9	NF/M	12" Vinyl Floor Tile (White) and Adhesive (12 sq.ft.)	X	N/A	Assumed positive
Nurse's Office	10	NF/S	Plaster Wall (450 sq.ft.)	4	N/A	Damaged
<b>*Note: HM# 8, 9 and 10 are new materials that were added during the January 2017 inspection.</b>						

**LEGEND**

F = Friable, NF = Nonfriable, VFT = Vinyl Floor Tile, NA = Not Applicable; Material Categories: S = Surfacing, M = Miscellaneous, T = Thermal System Insulation (TSI), HM = Homogenous Materials

**AHERA Assessment Category**

- |   |   |  |
|---|---|--|
| 1 = Damaged or Significantly Damaged TSI ACBM                   | 5 = Friable ACBM with Potential for Damage                                      |  |
| 2 = Damaged Friable Surfacing ACBM                              | 6 = Friable ACBM with Potential for Significant Damage                          | None = no assessment category, material has been removed |
| 3 = Significantly Damaged Friable Surfacing ACBM                | 7 = Any other Friable ACBM or Suspect ACBM                                      |  |
| 4 = Damaged or Significantly Damaged Friable Miscellaneous ACBM | X = Not applicable (material is nonfriable surfacing or miscellaneous material) |  |





District: Dixon Unified School District  
 School Name: Dixon Montessori Charter School  
 Building(s): Multi-purpose Room  
 Field Surveyor: Richard Casey  
 Surveillance Date: October 12, 2020

## AHERA: Triennial Reinspection Report

**Note: AHERA Reinspection has been completed in accordance with AHERA Rule 40 CFR Part 763.85(b)**

40 CFR Part 763.85 (b) requires all Asbestos Containing Building Materials and Suspect Asbestos Containing Building Materials be visually reinspected, reassessed, and touched to determine whether they have become friable since last inspection or reinspection. For each homogenous areas of newly friable material that is already assumed to be ACBM, bulk sample may be collected and submitted for analysis. A copy of the report shall be submitted to the Risk Manager for inclusion in th Asbestos Management Plan.

Legend of acronyms and terms at end of table

BUILDING AND FUNCTIONAL SPACE	HOMOGENEOUS MATERIAL NUMBER (HM#)	MATERIAL DESCRIPTION Friable (F), Nonfriable (NF), TSI (T), Surfacing (S), or Miscellaneous (M)		AHERA ASSESSMENT CATEGORY (1-7, X, None)	DATE ACBM REMOVED	COMMENTS
Multi-purpose Room and Stage	8	NF/M	9" Vinyl Floor Tile (Red) and Adhesive (2,500 sq.ft.)	X	N/A	Damaged in Multi-purpose Room and on Stage - assumed positive
Computer Lab, Occupational Training	9	NF/M	12" Vinyl Floor Tile (Beige) and Adhesive (1,000 sq.ft.)	X	N/A	Assumed positive
Occupational Training Office Restroom	10	NF/M	Sheet Vinyl Flooring (Beige) and Adhesive (75 sq.ft.)	X	N/A	Assumed positive
Kitchen	11	NF/M	Sheet Vinyl Flooring (Red) and Adhesive (250 sq.ft.)	X	N/A	Assumed positive
Throughout Building	12	NF/M	Base Cove Adhesive (400 sq.ft.)	X	N/A	Assumed positive
Throughout Building	13	F/M	Drywall and Joint Compound (8,000 sq.ft.)	5	N/A	Exists behind wood and fiberboard panels. Damaged in Speech Restroom ceiling and Multi-purpose Room - assumed positive
Computer Lab, Occupational Training Office	14	F/M	2'x4' Ceiling Panels (1,000 sq.ft.)	None	N/A	Non Detect, samples collected by ECG 3/7/13
Kitchen	15	NA	2'x4' Ceiling Panels - Hard Lid (250 sq.ft.)	5	N/A	Assumed positive
Multi-purpose Room Ceiling and Stage Ceiling	16	NF/M	2'x2' Acoustic Ceiling Tile (2,500 sq.ft.)	5	N/A	Assumed positive. Mastic exposed
Multi-purpose Room Ceiling	17	F/S	Hard Acoustic Texture Coat (800 sq.ft.)	5	N/A	Assumed positive
Multi-purpose Room	18	NF/M	12" Vinyl Floor Tile (Brown) and Adhesive (1 sq.ft.)	X	N/A	Assumed positive



District: Dixon Unified School District  
 School Name: Dixon Montessori Charter School  
 Building(s): Multi-purpose Room  
 Field Surveyor: Richard Casey  
 Surveillance Date: October 12, 2020

## AHERA: Triennial Reinspection Report

**Note: AHERA Reinspection has been completed in accordance with AHERA Rule 40 CFR Part 763.85(b)**

40 CFR Part 763.85 (b) requires all Asbestos Containing Building Materials and Suspect Asbestos Containing Building Materials be visually reinspected, reassessed, and touched to determine whether they have become friable since last inspection or reinspection. For each homogenous areas of newly friable material that is already assumed to be ACBM, bulk sample may be collected and submitted for analysis. A copy of the report shall be submitted to the Risk Manager for inclusion in th Asbestos Management Plan.

Legend of acronyms and terms at end of table

BUILDING AND FUNCTIONAL SPACE	HOMOGENEOUS MATERIAL NUMBER (HM#)	MATERIAL DESCRIPTION Friable (F), Nonfriable (NF), TSI (T), Surfacing (S), or Miscellaneous (M)		AHERA ASSESSMENT CATEGORY (1-7, X, None)	DATE ACBM REMOVED	COMMENTS
Multi-purpose Room	19	NF/M	9" Vinyl Floor Tile (Brown) (2 sq.ft.)	X	N/A	Assumed positive
Multi-purpose Room	8	NF/M	9" Vinyl Floor Tile (Red) and Adhesive (10 sq.ft.)	X	N/A	Assumed positive
Stage	20	NF/M	9" Vinyl Floor Tile (Maroon) (5 sq.ft.)	X	N/A	Assumed positive
Stage	21	F/M	2'x4' Ceiling Tile - Nailed In (1,000 sq.ft.)	5	N/A	Assumed positive
Mechanical Room	22	F/T	2" TSI Pipe Insulation (15 linear feet)	5	N/A	Assumed positive

**\*Note: HM# 18, 19, 20, 21 and 22, are new materials that were added during the January 2017 inspection.**

**LEGEND**

F = Friable, NF = Nonfriable, VFT = Vinyl Floor Tile, NA = Not Applicable; Material Categories: S = Surfacing, M = Miscellaneous, T = Thermal System Insulation (TSI), HM = Homogenous Materials

**AHERA Assessment Category**

1 = Damaged or Significantly Damaged TSI ACBM  
 2 = Damaged Friable Surfacing ACBM  
 3 = Significantly Damaged Friable Surfacing ACBM  
 4 = Damaged or Significantly Damaged Friable Miscellaneous ACBM

5 = Friable ACBM with Potential for Damage  
 6 = Friable ACBM with Potential for Significant Damage  
 7 = Any other Friable ACBM or Suspect ACBM,  
 X = Not applicable (material is nonfriable surfacing or miscellaneous material)

None = no assessment category, material has been removed



District: Dixon Unified School District  
 School Name: Dixon Montessori Charter School  
 Building(s): Wing 1 - 4 and Restrooms  
 Field Surveyor: Richard Casey  
 Surveillance Date: October 12, 2020

## AHERA: Triennial Reinspection Report

**Note: AHERA Reinspection has been completed in accordance with AHERA Rule 40 CFR Part 763.85(b)**

40 CFR Part 763.85 (b) requires all Asbestos Containing Building Materials and Suspect Asbestos Containing Building Materials be visually reinspected, reassessed, and touched to determine whether they have become friable since last inspection or reinspection. For each homogenous areas of newly friable material that is already assumed to be ACBM, bulk sample may be collected and submitted for analysis. A copy of the report shall be submitted to the Risk Manager for inclusion in th Asbestos Management Plan.

[Legend of acronyms and terms at end of table](#)

BUILDING AND FUNCTIONAL SPACE	HOMOGENEOUS MATERIAL NUMBER (HM#)	MATERIAL DESCRIPTION Friable (F), Nonfriable (NF), TSI (T), Surfacing (S), or Miscellaneous (M)		AHERA ASSESSMENT CATEGORY (1-7, X, None)	DATE ACBM REMOVED	COMMENTS
Room 1	18	NF/M	9" Vinyl Floor Tile (Beige w/Green) and Adhesive (900 sq.ft.)	X	N/A	Floor is visibly scuffed in multiple locations
Room 2, Room 4	19	NF/M	9" Vinyl Floor Tile (Tan w/Red) and Adhesive (1,800 sq.ft.)	X	N/A	Multiple damaged tiles in Room 2. Floor is visibly scuffed in multiple locations.
Room 3	20	NF/M	9" Vinyl Floor Tile (Beige w/Black) and Adhesive (900 sq.ft.)	X	N/A	Floor is visibly scuffed in multiple locations
Staff Restroom	21	NF/M	Sheet Vinyl Flooring (Tile Pattern) and Adhesive (150 sq.ft.)	X	N/A	Assumed positive - damage exposing mastic
Throughout Building	22	NF/M	Base Cove Adhesive (500 sq.ft.)	X	N/A	Assumed positive
Throughout Building	23	F/M	Drywall and Joint Compound (6,000 sq.ft.)	5	N/A	Assumed to exist behind wood and fiberboard panels
Rooms 1-4 on ceiling and walls.	24	F/M	1' x 1' Acoustic Ceiling Tile (4,800 sq.ft.)	5	N/A	Assumed positive
Girls Restroom	25	NF/M	4" Ceramic Tile, Yellow (200 sq.ft.)	X	N/A	Assumed positive
Girls Restroom	26	NF/M	4" Ceramic Tile, White (40 sq.ft.)	X	N/A	Assumed positive



District: Dixon Unified School District  
 School Name: Dixon Montessori Charter School  
 Building(s): Wing 1 - 4 and Restrooms  
 Field Surveyor: Richard Casey  
 Surveillance Date: October 12, 2020

## AHERA: Triennial Reinspection Report

**Note: AHERA Reinspection has been completed in accordance with AHERA Rule 40 CFR Part 763.85(b)**

40 CFR Part 763.85 (b) requires all Asbestos Containing Building Materials and Suspect Asbestos Containing Building Materials be visually reinspected, reassessed, and touched to determine whether they have become friable since last inspection or reinspection. For each homogenous areas of newly friable material that is already assumed to be ACBM, bulk sample may be collected and submitted for analysis. A copy of the report shall be submitted to the Risk Manager for inclusion in th Asbestos Management Plan.

[Legend of acronyms and terms at end of table](#)

BUILDING AND FUNCTIONAL SPACE	HOMOGENEOUS MATERIAL NUMBER (HM#)	MATERIAL DESCRIPTION Friable (F), Nonfriable (NF), TSI (T), Surfacing (S), or Miscellaneous (M)		AHERA ASSESSMENT CATEGORY (1-7, X, None)	DATE ACBM REMOVED	COMMENTS
Girls Restroom	27	NF/M	4" Ceramic Tile, Brown (15 sq.ft)	X	N/A	Assumed positive
Girls Restroom	28	NF/M	Terrazzo, Red with White (140 sq.ft.)	X	N/A	Assumed positive
Throughout Building	29	NF/M	Window Putty	X	N/A	Assumed positive
Room 4	30	NF/M	9" Vinyl Floor Tile (Maroon) and Adhesive (1 sq.ft.)	X	N/A	Assumed positive
Room 2	31	NF/M	9" Vinyl Floor Tile (Grey) and Adhesive (1 sq.ft.)	X	N/A	Assumed positive
Room 2	32	NF/M	9" Vinyl Floor Tile (Light Grey) and Adhesive (1 sq.ft.)	X	N/A	Assumed positive
Room 2	33	NF/M	9" Vinyl Floor Tile (Aqua Marine) and Adhesive (1 sq.ft.)	X	N/A	Assumed positive
Boys Restroom	34	NF/M	4" Ceramic Wall Tile, Grey (200 sq.ft.)	X	N/A	Assumed positive



District: Dixon Unified School District  
 School Name: Dixon Montessori Charter School  
 Building(s): Wing 1 - 4 and Restrooms  
 Field Surveyor: Richard Casey  
 Surveillance Date: October 12, 2020

## AHERA: Triennial Reinspection Report

**Note: AHERA Reinspection has been completed in accordance with AHERA Rule 40 CFR Part 763.85(b)**

40 CFR Part 763.85 (b) requires all Asbestos Containing Building Materials and Suspect Asbestos Containing Building Materials be visually reinspected, reassessed, and touched to determine whether they have become friable since last inspection or reinspection. For each homogenous areas of newly friable material that is already assumed to be ACBM, bulk sample may be collected and submitted for analysis. A copy of the report shall be submitted to the Risk Manager for inclusion in th Asbestos Management Plan.

Legend of acronyms and terms at end of table

BUILDING AND FUNCTIONAL SPACE	HOMOGENEOUS MATERIAL NUMBER (HM#)	MATERIAL DESCRIPTION Friable (F), Nonfriable (NF), TSI (T), Surfacing (S), or Miscellaneous (M)		AHERA ASSESSMENT CATEGORY (1-7, X, None)	DATE ACBM REMOVED	COMMENTS
Boys Restroom	35	NF/M	4" Ceramic Wall Tile (Light Grey) (55 sq.ft.)	X	N/A	Assumed positive
Boys Restroom	36	NF/M	Terrazzo, Black w/White (120 sq.ft.)	X	N/A	Assumed positive
Boys Restroom	37	NF/M	2" Ceramic Floor Tile, White (10 sq.ft.)	X	N/A	Assumed positive

**\*Note: HM# 25 - 37 are new materials that were added during the January 2017 inspection.**

**LEGEND**

F = Friable, NF = Nonfriable, VFT = Vinyl Floor Tile, NA = Not Applicable; Material Categories: S = Surfacing, M = Miscellaneous, T = Thermal System Insulation (TSI), HM = Homogenous Materials

**AHERA Assessment Category**

1 = Damaged or Significantly Damaged TSI ACBM  
 2 = Damaged Friable Surfacing ACBM  
 3 = Significantly Damaged Friable Surfacing ACBM  
 4 = Damaged or Significantly Damaged Friable Miscellaneous ACBM

5 = Friable ACBM with Potential for Damage  
 6 = Friable ACBM with Potential for Significant Damage  
 7 = Any other Friable ACBM or Suspect ACBM  
 X = Not applicable (material is nonfriable surfacing or miscellaneous material)

None = no assessment category, material has been removed



District: Dixon Unified School District  
 School Name: Dixon Montessori Charter School  
 Building(s): Wing 5 - 9  
 Field Surveyor: Richard Casey  
 Surveillance Date: October 12, 2020

## AHERA: Triennial Reinspection Report

**Note: AHERA Reinspection has been completed in accordance with AHERA Rule 40 CFR Part 763.85(b)**

40 CFR Part 763.85 (b) requires all Asbestos Containing Building Materials and Suspect Asbestos Containing Building Materials be visually reinspected, reassessed, and touched to determine whether they have become friable since last inspection or reinspection. For each homogenous areas of newly friable material that is already assumed to be ACM, bulk sample may be collected and submitted for analysis. A copy of the report shall be submitted to the Risk Manager for inclusion in the Asbestos Management Plan.

**Legend of acronyms and terms at end of table**

BUILDING AND FUNCTIONAL SPACE	HOMOGENEOUS MATERIAL NUMBER (HM#)	MATERIAL DESCRIPTION Friable (F), Nonfriable (NF), TSI (T), Surfacing (S), or Miscellaneous (M)	AHERA ASSESSMENT CATEGORY (1-7, X, None)	DATE ACM REMOVED	COMMENTS
Room 6, Room 9	25	NF/M 9" Vinyl Floor Tile (Beige w/Red) and Adhesive (1,800 sq.ft.)	X	N/A	Floor is visibly scuffed in multiple locations; crack at threshold
Room 5, Room 7, Room 8	26	NF/M 9" Vinyl Floor Tile (Beige w/Black) and Adhesive (1,800 sq.ft.)	X	N/A	Multiple damaged and missing tiles in Rooms 5 and 8 - replaced with blue tile Rooms 8 and 5; crack at threshold Room 7
Throughout Building	27	NF/M Base Cove Adhesive (600 sq.ft.)	X	N/A	Assumed positive
Throughout Building	28	F/M Drywall and Joint Compound (6,000 sq.ft.)	5	N/A	Assumed positive to exist behind wood and fiberboard panels
Throughout Building on Ceilings and Walls	29	F/M 1' x 1' Acoustic Ceiling Tile (6,000 sq.ft.)	5	N/A	Assumed positive
Room 6	30	NF/M 9" Vinyl Floor Tile (Red) and Adhesive (1 sq.ft.)	X	N/A	Assumed positive
Room 5	31	NF/M 9" Vinyl Floor Tile (Blue) and Adhesive (1 sq.ft.)	X	N/A	Assumed positive
Room 7	32	NF/M Sheet Vinyl (White Flower Pattern) and Adhesive (1 sq.ft.)	X	N/A	Assumed positive
<b>*Note: HM# 30 - 32 are new materials that were added during the January 2017 inspection.</b>					

**LEGEND**

F = Friable, NF = Nonfriable, VFT = Vinyl Floor Tile, NA = Not Applicable; Material Categories: S = Surfacing, M = Miscellaneous, T = Thermal System Insulation (TSI), HM = Homogenous Materials

**AHERA Assessment Category**

- |   |   |  |
|---|---|--|
| 1 = Damaged or Significantly Damaged TSI ACMB                   | 5 = Friable ACMB with Potential for Damage                                      |  |
| 2 = Damaged Friable Surfacing ACMB                              | 6 = Friable ACMB with Potential for Significant Damage                          | None = no assessment category, material has been removed |
| 3 = Significantly Damaged Friable Surfacing ACMB                | 7 = Any other Friable ACMB or Suspect ACMB,                                     |  |
| 4 = Damaged or Significantly Damaged Friable Miscellaneous ACMB | X = Not applicable (material is nonfriable surfacing or miscellaneous material) |  |



District: Dixon Unified School District  
 School Name: Dixon Montessori Charter School  
 Building(s): Wing 10 - 14  
 Field Surveyor: Richard Casey  
 Surveillance Date: October 12, 2020

## AHERA: Triennial Reinspection Report

**Note: AHERA Reinspection has been completed in accordance with AHERA Rule 40 CFR Part 763.85(b)**

40 CFR Part 763.85 (b) requires all Asbestos Containing Building Materials and Suspect Asbestos Containing Building Materials be visually reinspected, reassessed, and touched to determine whether they have become friable since last inspection or reinspection. For each homogenous areas of newly friable material that is already assumed to be ACM, bulk sample may be collected and submitted for analysis. A copy of the report shall be submitted to the Risk Manager for inclusion in the Asbestos Management Plan.

[Legend of acronyms and terms at end of table](#)

BUILDING AND FUNCTIONAL SPACE	HOMOGENEOUS MATERIAL NUMBER (HM#)	MATERIAL DESCRIPTION Friable (F), Nonfriable (NF), TSI (T), Surfacing (S), or Miscellaneous (M)		AHERA ASSESSMENT CATEGORY (1-7, X, None)	DATE ACM REMOVED	COMMENTS
Throughout Building	8	NF/M	9" Vinyl Floor Tile (Red) & Adhesive (4500 sq.ft.)	X	N/A	Multiple Damaged and Missing Tiles in Rooms 12 & 13. Minor Cracks and Damage Throughout.
Throughout Building	30	NF/M	Base Cove Adhesive (600 sq.ft.)	X	N/A	Assumed positive
Throughout Building	31	F/M	Drywall & Joint Compound (6000 sq.ft.)	5	N/A	Assumed to Exist Behind Wood and Fiberboard Panels.
Throughout Building on Walls & Ceilings	32	F/M	1'x1' Acoustic Ceiling Tile (6000 sq.ft.)	5	N/A	Assumed positive
Room 10	33	NF/M	9" Vinyl Floor Tile (Red w/White Stripe) & Adhesive (3 sq.ft.)	X	N/A	Assumed positive
Room 10	34	NF/M	9" Vinyl Floor Tile (Brown) & Adhesive (1 sq.ft.)	X	N/A	Assumed positive
Room 11	33	NF/M	9" Vinyl Floor Tile (Red w/White Stripe) & Adhesive, (12 sq.ft.)	X	N/A	Assumed positive - Minor Damage at threshold
Room 14	35	NF/M	9" Vinyl Floor Tile (White) & Adhesive (1 sq.ft.)	X	N/A	Assumed positive
Room 14	33	NF/M	9" Vinyl Floor Tile (Red w/White Stripe) & Adhesive (3 sq.ft.)	X	N/A	Assumed positive - Minor Damage at threshold
Room 13	36	NF/M	9" Vinyl Floor Tile (Maroon) & Adhesive (1 sq.ft.)	X	N/A	Assumed positive - Crack at threshold broken into pieces





District: Dixon Unified School District  
 School Name: Dixon Montessori Charter School  
 Building(s): Wing 10 - 14  
 Field Surveyor: Richard Casey  
 Surveillance Date: October 12, 2020

## AHERA: Triennial Reinspection Report

**Note: AHERA Reinspection has been completed in accordance with AHERA Rule 40 CFR Part 763.85(b)**

40 CFR Part 763.85 (b) requires all Asbestos Containing Building Materials and Suspect Asbestos Containing Building Materials be visually reinspected, reassessed, and touched to determine whether they have become friable since last inspection or reinspection. For each homogenous areas of newly friable material that is already assumed to be ACM, bulk sample may be collected and submitted for analysis. A copy of the report shall be submitted to the Risk Manager for inclusion in the Asbestos Management Plan.

**Legend of acronyms and terms at end of table**

BUILDING AND FUNCTIONAL SPACE	HOMOGENEOUS MATERIAL NUMBER (HM#)	MATERIAL DESCRIPTION Friable (F), Nonfriable (NF), TSI (T), Surfacing (S), or Miscellaneous (M)		AHERA ASSESSMENT CATEGORY (1-7, X, None)	DATE ACM REMOVED	COMMENTS
Room 13	35	NF/M	9" Vinyl Floor Tile (White) & Adhesive (1 sq.ft.)	X	N/A	Assumed positive
Room 12	36	NF/M	9X9 Purple patch (5 sq.ft)	X	N/A	Assumed positive
Room 13	33	NF/M	9" Vinyl Floor Tile (Red w/White Stripe) & Adhesive (2 sq.ft.)	X	N/A	Assumed positive

**\*Note: HM# 33 to 36 are new materials that were added during the January 2017 inspection.**

**LEGEND**

F = Friable, NF = Nonfriable, VFT = Vinyl Floor Tile, NA = Not Applicable; Material Categories: S = Surfacing, M = Miscellaneous, T = Thermal System Insulation (TSI), HM = Homogenous Materials

**AHERA Assessment Category**

- 1 = Damaged or Significantly Damaged TSI ACM
- 2 = Damaged Friable Surfacing ACM
- 3 = Significantly Damaged Friable Surfacing ACM
- 4 = Damaged or Significantly Damaged Friable Miscellaneous ACM

- 5 = Friable ACM with Potential for Damage
- 6 = Friable ACM with Potential for Significant Damage
- 7 = Any other Friable ACM or Suspect ACM,
- X = Not applicable (material is nonfriable surfacing or miscellaneous material)

None = no assessment category, material has been removed



District: Dixon Unified School District  
 School Name: Dixon Montessori Charter School  
 Building(s): Wing 15 - 20  
 Field Surveyor: Richard Casey  
 Surveillance Date: October 12, 2020

## AHERA: Triennial Reinspection Report

**Note: AHERA Reinspection has been completed in accordance with AHERA Rule 40 CFR Part 763.85(b)**

40 CFR Part 763.85 (b) requires all Asbestos Containing Building Materials and Suspect Asbestos Containing Building Materials be visually reinspected, reassessed, and touched to determine whether they have become friable since last inspection or reinspection. For each homogenous areas of newly friable material that is already assumed to be ACBM, bulk sample may be collected and submitted for analysis. A copy of the report shall be submitted to the Risk Manager for inclusion in the Asbestos Management Plan.

[Legend of acronyms and terms at end of table](#)

BUILDING AND FUNCTIONAL SPACE	HOMOGENEOUS MATERIAL NUMBER (HM#)	MATERIAL DESCRIPTION Friable (F), Nonfriable (NF), TSI (T), Surfacing (S), or Miscellaneous (M)		AHERA ASSESSMENT CATEGORY (1-7, X, None)	DATE ACBM REMOVED	COMMENTS
Throughout Building	8	NF/M	9" Vinyl Floor Tile (Red) and Adhesive (5400 sq.ft.)	X	N/A	Floor is visibly scuffed in multiple locations
Exterior Storage	33	NF/M	12" Vinyl Floor Tile (Grey) and Adhesive (150 sq.ft.)	X	N/A	Assumed positive
Throughout Building	34	NF/M	Base Cove Adhesive (720 linear feet)	X	N/A	Assumed positive
Throughout Building	35	F/M	Drywall and Joint Compound (7200 sq.ft.)	5	N/A	Assumed to exist behind wood and fiberboard panels
Throughout Building	36	F/M	2 x 4' Ceiling Panels (4,780 sq.ft.)	5	N/A	Not Suspected, Plastic coated fiberglass panels.
Rooms 15, 16, 18, 19	37	F/M	1' x 1' Acoustic Ceiling Tile (720 sq.ft.)	5	N/A	Assumed positive
Boys and Girls Restroom	38	NF/M	Wainscoating Adhesive (700 sq.ft.)	X	N/A	Assumed positive
Boys and Girls Restroom	39	NF/M	2" x 2" Ceramic Floor Tile, sand pattern (250 sq.ft.)	X	N/A	Assumed positive
Boys Restroom	40	NF/M	1" x 1" Ceramic Floor Tile, sand pattern (10 sq.ft.)	X	N/A	Assumed positive
Girls Restroom	41	NF/M	1" x 1" Ceramic Floor Tile, grey (34 sq.ft.)	X	N/A	Assumed positive
Girls Restroom	42	NF/M	1" x 2" Ceramic Floor Tile, yellow (34 sq.ft.)	X	N/A	Assumed positive



District: Dixon Unified School District  
 School Name: Dixon Montessori Charter School  
 Building(s): Wing 15 - 20  
 Field Surveyor: Richard Casey  
 Surveillance Date: October 12, 2020

## AHERA: Triennial Reinspection Report

**Note: AHERA Reinspection has been completed in accordance with AHERA Rule 40 CFR Part 763.85(b)**

40 CFR Part 763.85 (b) requires all Asbestos Containing Building Materials and Suspect Asbestos Containing Building Materials be visually reinspected, reassessed, and touched to determine whether they have become friable since last inspection or reinspection. For each homogenous areas of newly friable material that is already assumed to be ACBM, bulk sample may be collected and submitted for analysis. A copy of the report shall be submitted to the Risk Manager for inclusion in the Asbestos Management Plan.

Legend of acronyms and terms at end of table

BUILDING AND FUNCTIONAL SPACE	HOMOGENEOUS MATERIAL NUMBER (HM#)	MATERIAL DESCRIPTION Friable (F), Nonfriable (NF), TSI (T), Surfacing (S), or Miscellaneous (M)		AHERA ASSESSMENT CATEGORY (1-7, X, None)	DATE ACBM REMOVED	COMMENTS
Girls Restroom	43	NF/M	1" x 2" Ceramic Floor Tile, grey (34 sq.ft.)	X	N/A	Assumed positive
Girls Restroom	44	NF/M	2" x 2" Ceramic Floor Tile, yellow (34 sq.ft.)	X	N/A	Assumed positive
PE Storage	45	F/T	TSI Insulation 3" ( 4 Linear Feet)	5	N/A	Assumed positive
PE Storage	46	F/T	TSI Pipe Elbow 3" ( 1 )	5	N/A	Assumed positive
Elec/Storage	47	F/M	Drywall and Skimcoat (100 sq.ft)	4	N/A	Assumed positive - Damaged
Boys Restroom near PE storage	48	F/S	Smooth Plaster (100 sq.ft)	2	N/A	Assumed positive - Damaged
Boys Restroom	49	NF/M	2" x 2" Ceramic Floor Tile White (10 sq.ft.)	X	N/A	Assumed positive
<b>*Note: HM# 38 - 45 are new materials that were added during the January 2017 inspection.</b>						

**LEGEND**

F = Friable, NF = Nonfriable, VFT = Vinyl Floor Tile, NA = Not Applicable; Material Categories: S = Surfacing, M = Miscellaneous, T = Thermal System Insulation (TSI), HM = Homogenous Materials

**AHERA Assessment Category**

- 1 = Damaged or Significantly Damaged TSI ACBM
- 2 = Damaged Friable Surfacing ACBM
- 3 = Significantly Damaged Friable Surfacing ACBM
- 4 = Damaged or Significantly Damaged Friable Miscellaneous ACBM

- 5 = Friable ACBM with Potential for Damage
- 6 = Friable ACBM with Potential for Significant Damage
- 7 = Any other Friable ACBM or Suspect ACBM
- X = Not applicable (material is nonfriable surfacing or miscellaneous material)

None = no assessment category, material has been removed



District: Dixon Unified School District  
 School Name: Dixon Montessori Charter School  
 Building(s): Classroom 21 and Restroom  
 Field Surveyor: Richard Casey  
 Surveillance Date: October 12, 2020

## AHERA: Triennial Reinspection Report

**Note: AHERA Reinspection has been completed in accordance with AHERA Rule 40 CFR Part 763.85(b)**

40 CFR Part 763.85 (b) requires all Asbestos Containing Building Materials and Suspect Asbestos Containing Building Materials be visually reinspected, reassessed, and touched to determine whether they have become friable since last inspection or reinspection. For each homogenous areas of newly friable material that is already assumed to be ACBM, bulk sample may be collected and submitted for analysis. A copy of the report shall be submitted to the Risk Manager for inclusion in th Asbestos Management Plan.

Legend of acronyms and terms at end of table

BUILDING AND FUNCTIONAL SPACE	HOMOGENEOUS MATERIAL NUMBER (HM#)	MATERIAL DESCRIPTION Friable (F), Nonfriable (NF), TSI (T), Surfacing (S), or Miscellaneous (M)		AHERA ASSESSMENT CATEGORY (1-7, X, None)	DATE ACBM REMOVED	COMMENTS
Classroom 21	38	NF/M	12" Vinyl Floor Tile (White w/Dots) and Adhesive (800 sq.ft.)	X	N/A	Assumed, minor damage (cracked)
Restroom	39	NF/M	Sheet Vinyl Flooring (Green Dot) and Adhesive (150 sq.ft.)	X	N/A	Assumed positive
Throughout	40	NF/M	Base Cove Adhesive (250 sq.ft.)	X	N/A	Assumed positive
Throughout	41	F/M	Drywall and Joint Compound (1,500 sq.ft.)	5	N/A	Assumed to exist behind wood and fiberboard panels
Throughout	42	NF/M	12" Acoustic Ceiling Tile (1,500 sq.ft.)	X	N/A	Assumed positive
Boys and Girls Restrooms	43	NF/M	1" x 2" Ceramic Floor Tile, yellow (150 each)	X	N/A	Assumed positive
Restroom	44	NF/M	1" x 1" Ceramic Floor Tile, Brown (150 each)	X	N/A	Assumed positive
Restroom	45	NF/M	2" x 2" Ceramic Floor Tile, Sand Pattern (150 each)	X	N/A	Assumed positive

**\*Note: HM# 17 - 21 are new materials that were added during the January 2017 inspection.**

**LEGEND**

F = Friable, NF = Nonfriable, VFT = Vinyl Floor Tile, NA = Not Applicable; Material Categories: S = Surfacing, M = Miscellaneous, T = Thermal System Insulation (TSI), HM = Homogenous Materials

**AHERA Assessment Category**

1 = Damaged or Significantly Damaged TSI ACBM  
 2 = Damaged Friable Surfacing ACBM  
 3 = Significantly Damaged Friable Surfacing ACBM  
 4 = Damaged or Significantly Damaged Friable Miscellaneous ACBM

5 = Friable ACBM with Potential for Damage  
 6 = Friable ACBM with Potential for Significant Damage  
 7 = Any other Friable ACBM or Suspect ACBM  
 X = Not applicable (material is nonfriable surfacing or miscellaneous material)

None = no assessment category, material has been removed



District: Dixon Unified School District  
 School Name: Dixon Montessori Charter School  
 Building(s): Portable Classroom 22  
 Field Surveyor: Richard Casey  
 Surveillance Date: October 12, 2020

## AHERA: Triennial Reinspection Report

**Note: AHERA Reinspection has been completed in accordance with AHERA Rule 40 CFR Part 763.85(b)**

40 CFR Part 763.85 (b) requires all Asbestos Containing Building Materials and Suspect Asbestos Containing Building Materials be visually reinspected, reassessed, and touched to determine whether they have become friable since last inspection or reinspection. For each homogenous areas of newly friable material that is already assumed to be ACM, bulk sample may be collected and submitted for analysis. A copy of the report shall be submitted to the Risk Manager for inclusion in the Asbestos Management Plan.

**Legend of acronyms and terms at end of table**

BUILDING AND FUNCTIONAL SPACE	HOMOGENEOUS MATERIAL NUMBER (HM#)	MATERIAL DESCRIPTION Friable (F), Nonfriable (NF), TSI (T), Surfacing (S), or Miscellaneous (M)		AHERA ASSESSMENT CATEGORY (1-7, X, None)	DATE ACBM REMOVED	COMMENTS
Portable Classroom 22	43	NF/M	12" Vinyl Floor Tile (Beige Mottled) and Adhesive (320 sq.ft.)	X	N/A	Assumed positive
Portable Classroom 22	44	NF/M	Base Cove Adhesive (150 sq.ft.)	X	N/A	Assumed positive
Portable Classroom 22	45	F/M	Drywall and Joint Compound (3,000 sq.ft.)	5	N/A	Assumed to exist behind wood and fiberboard wall panels.
Portable Classroom 22	46	F/S	Drywall - Textured (2,000 sq.ft.)	5	N/A	Assumed positive
Portable Classroom 22	47	F/M	12" Acoustic Ceiling Tile (1,200 sq.ft.)	5	N/A	Assumed positive
Portable Classroom 22	48	NF/M	Carpet, Brown and Adhesive (480 sq.ft.)	X	N/A	Assumed positive

**\*Note: HM# 48 is a new material that was added during the January 2017 inspection.**

**LEGEND**

F = Friable, NF = Nonfriable, VFT = Vinyl Floor Tile, NA = Not Applicable; Material Categories: S = Surfacing, M = Miscellaneous, T = Thermal System Insulation (TSI), HM = Homogenous Materials

**AHERA Assessment Category**

- 1 = Damaged or Significantly Damaged TSI ACM
- 2 = Damaged Friable Surfacing ACM
- 3 = Significantly Damaged Friable Surfacing ACM
- 4 = Damaged or Significantly Damaged Friable Miscellaneous ACM

- 5 = Friable ACM with Potential for Damage
- 6 = Friable ACM with Potential for Significant Damage
- 7 = Any other Friable ACM or Suspect ACM,
- X = Not applicable (material is nonfriable surfacing or miscellaneous material)

None = no assessment category, material has been removed



District: Dixon Unified School District  
 School Name: Dixon Montessori Charter School  
 Building(s): Portable Classroom 23  
 Field Surveyor: Richard Casey  
 Surveillance Date: October 12, 2020

## AHERA: Triennial Reinspection Report

**Note: AHERA Reinspection has been completed in accordance with AHERA Rule 40 CFR Part 763.85(b)**

40 CFR Part 763.85 (b) requires all Asbestos Containing Building Materials and Suspect Asbestos Containing Building Materials be visually reinspected, reassessed, and touched to determine whether they have become friable since last inspection or reinspection. For each homogenous areas of newly friable material that is already assumed to be ACBM, bulk sample may be collected and submitted for analysis. A copy of the report shall be submitted to the Risk Manager for inclusion in the Asbestos Management Plan.

**Legend of acronyms and terms at end of table**

BUILDING AND FUNCTIONAL SPACE	HOMOGENEOUS MATERIAL NUMBER (HM#)	MATERIAL DESCRIPTION Friable (F), Nonfriable (NF), TSI (T), Surfacing (S), or Miscellaneous (M)		AHERA ASSESSMENT CATEGORY (1-7, X, None)	DATE ACBM REMOVED	COMMENTS
Portable Classroom 23	49	NF/M	Base Cove Adhesive (150 sq.ft.)	X	N/A	Assumed positive
Portable Classroom 23	50	F/M	Drywall and Joint Compound (1,500 sq.ft.)	5	N/A	Assumed to exist behind wood and fiberboard panels
Portable Classroom 23	51	F/M	2' x 4' Ceiling Panels (1,500 sq.ft.)	5	N/A	Panels are plastic-coated fiberglass
Portable Classroom 23	52	NF/M	12" Vinyl Floor Tile, Beige (175 sq.ft.)	X	N/A	Assumed positive
Portable Classroom 23	53	NF/M	12" Vinyl Floor Tile, Grey (75 sq.ft.)	X	N/A	Assumed positive
<b>*Note: HM# 52 and 53 are new materials that were added during the January 2017 inspection.</b>						

**LEGEND**

F = Friable, NF = Nonfriable, VFT = Vinyl Floor Tile, NA = Not Applicable; Material Categories: S = Surfacing, M = Miscellaneous, T = Thermal System Insulation (TSI), HM = Homogenous Materials

**AHERA Assessment Category**

- 1 = Damaged or Significantly Damaged TSI ACBM
- 2 = Damaged Friable Surfacing ACBM
- 3 = Significantly Damaged Friable Surfacing ACBM
- 4 = Damaged or Significantly Damaged Friable Miscellaneous ACBM

- 5 = Friable ACBM with Potential for Damage
- 6 = Friable ACBM with Potential for Significant Damage
- 7 = Any other Friable ACBM or Suspect ACBM,
- X = Not applicable (material is nonfriable surfacing or miscellaneous material)

None = no assessment category, material has been removed



District: Dixon Unified School District  
 School Name: Dixon Montessori Charter School  
 Building(s): Portable Classroom 24  
 Field Surveyor: Richard Casey  
 Surveillance Date: October 12, 2020

## AHERA: Triennial Reinspection Report

**Note: AHERA Reinspection has been completed in accordance with AHERA Rule 40 CFR Part 763.85(b)**

40 CFR Part 763.85 (b) requires all Asbestos Containing Building Materials and Suspect Asbestos Containing Building Materials be visually reinspected, reassessed, and touched to determine whether they have become friable since last inspection or reinspection. For each homogenous areas of newly friable material that is already assumed to be ACBM, bulk sample may be collected and submitted for analysis. A copy of the report shall be submitted to the Risk Manager for inclusion in th Asbestos Management Plan.

**Legend of acronyms and terms at end of table**

BUILDING AND FUNCTIONAL SPACE	HOMOGENEOUS MATERIAL NUMBER (HM#)	MATERIAL DESCRIPTION Friable (F), Nonfriable (NF), TSI (T), Surfacing (S), or Miscellaneous (M)		AHERA ASSESSMENT CATEGORY (1-7, X, None)	DATE ACBM REMOVED	COMMENTS
Portable Classroom 24	52	NF/M	12" Vinyl Floor Tile (White Mottled) and Adhesive (2,000 sq.ft.)	X	N/A	Minor damage - assumed positive
Portable Classroom 24	53	NF/M	Sheet Vinyl Flooring (Beige) and Adhesive (150 sq.ft.)	X	N/A	Assumed positive
Portable Classroom 24	54	NF/M	Base Cove Adhesive (400 sq.ft.)	X	N/A	Assumed positive
Portable Classroom 24	55	F/M	Drywall and Joint Compound (3,000 sq.ft.)	5	N/A	Assumed to exist behind wood and fiberboard panels
Portable Classroom 24	56	F/M	2' x 4' Ceiling Panels (2,700 sq.ft.)	5	N/A	Panels are plastic-coated fiberglass
Portable Classroom 24	57	NF/M	Carpet, Red and Adhesive (350 sq.ft.)	X	N/A	Assumed positive

**\*Note: HM# 57 is a new material that was added during the January 2017 inspection.**

**LEGEND**

F = Friable, NF = Nonfriable, VFT = Vinyl Floor Tile, NA = Not Applicable; Material Categories: S = Surfacing, M = Miscellaneous, T = Thermal System Insulation (TSI), HM = Homogenous Materials

**AHERA Assessment Category**

- 1 = Damaged or Significantly Damaged TSI ACBM
- 2 = Damaged Friable Surfacing ACBM
- 3 = Significantly Damaged Friable Surfacing ACBM
- 4 = Damaged or Significantly Damaged Friable Miscellaneous ACBM

- 5 = Friable ACBM with Potential for Damage
- 6 = Friable ACBM with Potential for Significant Damage
- 7 = Any other Friable ACBM or Suspect ACBM,
- X = Not applicable (material is nonfriable surfacing or miscellaneous material)

None = no assessment category, material has been removed





District: Dixon Unified School District  
 School Name: Dixon Montessori Charter School  
 Building(s): Portable Classroom 25  
 Field Surveyor: Richard Casey  
 Surveillance Date: October 12, 2020

## AHERA: Triennial Reinspection Report

**Note: AHERA Reinspection has been completed in accordance with AHERA Rule 40 CFR Part 763.85(b)**

40 CFR Part 763.85 (b) requires all Asbestos Containing Building Materials and Suspect Asbestos Containing Building Materials be visually reinspected, reassessed, and touched to determine whether they have become friable since last inspection or reinspection. For each homogenous areas of newly friable material that is already assumed to be ACBM, bulk sample may be collected and submitted for analysis. A copy of the report shall be submitted to the Risk Manager for inclusion in the Asbestos Management Plan.

[Legend of acronyms and terms at end of table](#)

BUILDING AND FUNCTIONAL SPACE	HOMOGENEOUS MATERIAL NUMBER (HM#)	MATERIAL DESCRIPTION Friable (F), Nonfriable (NF), TSI (T), Surfacing (S), or Miscellaneous (M)		AHERA ASSESSMENT CATEGORY (1-7, X, None)	DATE ACBM REMOVED	COMMENTS
Portable Classroom 25	52	NF/M	12" Vinyl Floor Tile (White Mottled) and Adhesive (2,000 sq.ft.)	X	N/A	Assumed
Portable Classroom 25	53	NF/M	Sheet Vinyl Flooring (Beige) and Adhesive (150 sq.ft.)	X	N/A	Assumed
Portable Classroom 25	54	NF/M	Base Cove Adhesive (400 sq.ft.)	X	N/A	Assumed
Portable Classroom 25	55	F/M	Drywall and Joint Compound (3,000 sq.ft.)	5	N/A	Assumed to exist behind wood and fiberboard panels
Portable Classroom 25	56	F/M	2' x 4' Ceiling Panels (2,700 sq.ft.)	5	N/A	Panels are plastic-coated fiberglass

**LEGEND**

F = Friable, NF = Nonfriable, VFT = Vinyl Floor Tile, NA = Not Applicable; Material Categories: S = Surfacing, M = Miscellaneous, T = Thermal System Insulation (TSI), HM = Homogenous Materials

**AHERA Assessment Category**

1 = Damaged or Significantly Damaged TSI ACBM  
 2 = Damaged Friable Surfacing ACBM  
 3 = Significantly Damaged Friable Surfacing ACBM  
 4 = Damaged or Significantly Damaged Friable Miscellaneous ACBM

5 = Friable ACBM with Potential for Damage  
 6 = Friable ACBM with Potential for Significant Damage  
 7 = Any other Friable ACBM or Suspect ACBM,  
 X = Not applicable (material is nonfriable surfacing or miscellaneous material)

None = no assessment category, material has been removed



District: Dixon Unified School District  
 School Name: Dixon Montessori Charter School  
 Building(s): Portable Classroom 26  
 Field Surveyor: Richard Casey  
 Surveillance Date: October 12, 2020

## AHERA: Triennial Reinspection Report

**Note: AHERA Reinspection has been completed in accordance with AHERA Rule 40 CFR Part 763.85(b)**

40 CFR Part 763.85 (b) requires all Asbestos Containing Building Materials and Suspect Asbestos Containing Building Materials be visually reinspected, reassessed, and touched to determine whether they have become friable since last inspection or reinspection. For each homogenous areas of newly friable material that is already assumed to be ACM, bulk sample may be collected and submitted for analysis. A copy of the report shall be submitted to the Risk Manager for inclusion in the Asbestos Management Plan.

**Legend of acronyms and terms at end of table**

BUILDING AND FUNCTIONAL SPACE	HOMOGENEOUS MATERIAL NUMBER (HM#)	MATERIAL DESCRIPTION Friable (F), Nonfriable (NF), TSI (T), Surfacing (S), or Miscellaneous (M)		AHERA ASSESSMENT CATEGORY (1-7, X, None)	DATE ACM REMOVED	COMMENTS
Portable Classroom 26	52	NF/M	12" Vinyl Floor Tile (White Mottled) and Adhesive (2,000 sq.ft.)	X	N/A	Assumed positive
Portable Classroom 26	53	NF/M	Sheet Vinyl Flooring (Beige) and Adhesive (150 sq.ft.)	X	N/A	Assumed positive
Portable Classroom 26	54	NF/M	Base Cove Adhesive (400 linear feet)	X	N/A	Assumed positive
Portable Classroom 26	55	F/M	Drywall and Joint Compound (3,000 sq.ft.)	5	N/A	Assumed to exist behind wood and fiberboard panels
Portable Classroom 26	56	F/M	2' x 4' Ceiling Panels (2,700 sq.ft.)	5	N/A	Panels are plastic-coated fiberglass
Portable Classroom 26	58	NF/M	Cream Color Sink Undercoat (4 sq.ft)	X	N/A	Assumed positive
Portable Classroom 26	57	NF/M	Carpet, Red and Adhesive (350 sq.ft.)	X	N/A	Assumed positive
<b>*Note: HM# 57 is a new material that was added during the January 2017 inspection.</b>						

**LEGEND**

F = Friable, NF = Nonfriable, VFT = Vinyl Floor Tile, NA = Not Applicable; Material Categories: S = Surfacing, M = Miscellaneous, T = Thermal System Insulation (TSI), HM = Homogenous Materials

**AHERA Assessment Category**

- 1 = Damaged or Significantly Damaged TSI ACM
- 2 = Damaged Friable Surfacing ACM
- 3 = Significantly Damaged Friable Surfacing ACM
- 4 = Damaged or Significantly Damaged Friable Miscellaneous ACM

- 5 = Friable ACM with Potential for Damage
- 6 = Friable ACM with Potential for Significant Damage
- 7 = Any other Friable ACM or Suspect ACM,
- X = Not applicable (material is nonfriable surfacing or miscellaneous material)

None = no assessment category, material has been removed



District: Dixon Unified School District  
 School Name: Dixon Montessori Charter School  
 Building(s): Portable Classroom 27  
 Field Surveyor: Richard Casey  
 Surveillance Date: October 12, 2020

## AHERA: Triennial Reinspection Report

**Note: AHERA Reinspection has been completed in accordance with AHERA Rule 40 CFR Part 763.85(b)**

40 CFR Part 763.85 (b) requires all Asbestos Containing Building Materials and Suspect Asbestos Containing Building Materials be visually reinspected, reassessed, and touched to determine whether they have become friable since last inspection or reinspection. For each homogenous areas of newly friable material that is already assumed to be ACBM, bulk sample may be collected and submitted for analysis. A copy of the report shall be submitted to the Risk Manager for inclusion in the Asbestos Management Plan.

[Legend of acronyms and terms at end of table](#)

BUILDING AND FUNCTIONAL SPACE	HOMOGENEOUS MATERIAL NUMBER (HM#)	MATERIAL DESCRIPTION Friable (F), Nonfriable (NF), TSI (T), Surfacing (S), or Miscellaneous (M)		AHERA ASSESSMENT CATEGORY (1-7, X, None)	DATE ACBM REMOVED	COMMENTS
Portable Classroom 27	57	NF/M	Sheet Vinyl Flooring (Blue) and Adhesive (500 sq.ft.)	X	N/A	Assumed positive
Portable Classroom 27	58	NF/M	Base Cove Adhesive (150 sq.ft.)	X	N/A	Assumed positive
Portable Classroom 27	59	F/M	Drywall and Joint Compound (1,500 sq.ft.)	5	N/A	Assumed to exist behind wood and fiberboard wall panels
Portable Classroom 27	60	F/M	2' x 4' Ceiling Panels (1,200 sq.ft.)	None	N/A	ND, Samples collected by ECG 3/7/13
Portable Classroom 27	61	NF/M	Carpet, Multicolor and Adhesive (400 sq.ft.)	X	N/A	Assumed positive
Portable Classroom 27	63	NF/M	Black sink undercoat (2 sq.ft)	X	N/A	Assumed positive
Portable Classroom 27	62	F/S	Drywall - Textured (50 sq.ft.)	5	N/A	Assumed positive

**LEGEND**

F = Friable, NF = Nonfriable, VFT = Vinyl Floor Tile, NA = Not Applicable; Material Categories: S = Surfacing, M = Miscellaneous, T = Thermal System Insulation (TSI), HM = Homogenous Materials

**AHERA Assessment Category**

- 1 = Damaged or Significantly Damaged TSI ACBM
- 2 = Damaged Friable Surfacing ACBM
- 3 = Significantly Damaged Friable Surfacing ACBM
- 4 = Damaged or Significantly Damaged Friable Miscellaneous ACBM

- 5 = Friable ACBM with Potential for Damage
- 6 = Friable ACBM with Potential for Significant Damage
- 7 = Any other Friable ACBM or Suspect ACBM,
- X = Not applicable (material is nonfriable surfacing or miscellaneous material)

None = no assessment category, material has been removed



District: Dixon Unified School District  
 School Name: Dixon Montessori Charter School  
 Building(s): Portable Classroom 28  
 Field Surveyor: Richard Casey  
 Surveillance Date: October 12, 2020

## AHERA: Triennial Reinspection Report

**Note: AHERA Reinspection has been completed in accordance with AHERA Rule 40 CFR Part 763.85(b)**

40 CFR Part 763.85 (b) requires all Asbestos Containing Building Materials and Suspect Asbestos Containing Building Materials be visually reinspected, reassessed, and touched to determine whether they have become friable since last inspection or reinspection. For each homogenous areas of newly friable material that is already assumed to be ACBM, bulk sample may be collected and submitted for analysis. A copy of the report shall be submitted to the Risk Manager for inclusion in th Asbestos Management Plan.

**Legend of acronyms and terms at end of table**

BUILDING AND FUNCTIONAL SPACE	HOMOGENEOUS MATERIAL NUMBER (HM#)	MATERIAL DESCRIPTION Friable (F), Nonfriable (NF), TSI (T), Surfacing (S), or Miscellaneous (M)		AHERA ASSESSMENT CATEGORY (1-7, X, None)	DATE ACBM REMOVED	COMMENTS
Portable Classroom 28	61	NF/M	Sheet Vinyl Flooring (Blue/Green) and Adhesive (800 sq.ft.)	X	N/A	Assumed
Portable Classroom 28	62	NF/M	Base Cove Adhesive (200 sq.ft.)	X	N/A	Assumed
Portable Classroom 28	63	F/M	Drywall and Joint Compound (2,000 sq.ft.)	5	N/A	Assumed to exist behind wood and fiberboards wall panels
Portable Classroom 28	64	NF/M	Large Sheet Panel Ceiling (1,600 sq.ft.)	None	N/A	ND, Sample collected by ECG 3/7/13
<b>*Note: Materials assumed to be the same from previous report. Portable Classroom 28 was locked and unable to access.</b>						

**LEGEND**

F = Friable, NF = Nonfriable, VFT = Vinyl Floor Tile, NA = Not Applicable; Material Categories: S = Surfacing, M = Miscellaneous, T = Thermal System Insulation (TSI), HM = Homogenous Materials

**AHERA Assessment Category**

- 1 = Damaged or Significantly Damaged TSI ACBM
- 2 = Damaged Friable Surfacing ACBM
- 3 = Significantly Damaged Friable Surfacing ACBM
- 4 = Damaged or Significantly Damaged Friable Miscellaneous ACBM

- 5 = Friable ACBM with Potential for Damage
- 6 = Friable ACBM with Potential for Significant Damage
- 7 = Any other Friable ACBM or Suspect ACBM,
- X = Not applicable (material is nonfriable surfacing or miscellaneous material)

None = no assessment category, material has been removed



District: Dixon Unified School District  
 School Name: Dixon Montessori Charter School  
 Building(s): Portable Classroom 29  
 Field Surveyor: Richard Casey  
 Surveillance Date: October 12, 2020

## AHERA: Triennial Reinspection Report

**Note: AHERA Reinspection has been completed in accordance with AHERA Rule 40 CFR Part 763.85(b)**

40 CFR Part 763.85 (b) requires all Asbestos Containing Building Materials and Suspect Asbestos Containing Building Materials be visually reinspected, reassessed, and touched to determine whether they have become friable since last inspection or reinspection. For each homogenous areas of newly friable material that is already assumed to be ACM, bulk sample may be collected and submitted for analysis. A copy of the report shall be submitted to the Risk Manager for inclusion in the Asbestos Management Plan.

**Legend of acronyms and terms at end of table**

BUILDING AND FUNCTIONAL SPACE	HOMOGENEOUS MATERIAL NUMBER (HM#)	MATERIAL DESCRIPTION Friable (F), Nonfriable (NF), TSI (T), Surfacing (S), or Miscellaneous (M)		AHERA ASSESSMENT CATEGORY (1-7, X, None)	DATE ACBM REMOVED	COMMENTS
Portable Classroom 29	65	NF/M	Base Cove Adhesive (256 sq.ft.)	X	N/A	Assumed positive
Portable Classroom 29	66	F/M	Drywall and Joint Compound (2,600 sq.ft.)	5	N/A	Assumed to exist behind wood and fiberboard wall panels
Portable Classroom 29	69	NF/M	Gray Under Sink Coating (2 sq.ft)	X	N/A	Assumed positive
Portable Classroom 29	67	F/M	2' x 4' Ceiling Panels (960 sq.ft.)	5	N/A	Sample Collected ECG 3/7/13
Portable Classroom 29	68	NF/M	Carpet, Brown and Adhesive (900 sq.ft.)	X	N/A	Assumed positive
<b>*Note: HM# 68 is a new material that was added during the January 2017 inspection.</b>						

**LEGEND**

F = Friable, NF = Nonfriable, VFT = Vinyl Floor Tile, NA = Not Applicable; Material Categories: S = Surfacing, M = Miscellaneous, T = Thermal System Insulation (TSI), HM = Homogenous Materials

**AHERA Assessment Category**

1 = Damaged or Significantly Damaged TSI ACMB  
 2 = Damaged Friable Surfacing ACMB  
 3 = Significantly Damaged Friable Surfacing ACMB  
 4 = Damaged or Significantly Damaged Friable Miscellaneous ACMB

5 = Friable ACMB with Potential for Damage  
 6 = Friable ACMB with Potential for Significant Damage  
 7 = Any other Friable ACMB or Suspect ACMB,  
 X = Not applicable (material is nonfriable surfacing or miscellaneous material)

None = no assessment category, material has been removed



District: Dixon Unified School District  
 School Name: Dixon Montessori Charter School  
 Building(s): Portable Classroom 30  
 Field Surveyor: Richard Casey  
 Surveillance Date: October 12, 2020

## AHERA: Triennial Reinspection Report

**Note: AHERA Reinspection has been completed in accordance with AHERA Rule 40 CFR Part 763.85(b)**

40 CFR Part 763.85 (b) requires all Asbestos Containing Building Materials and Suspect Asbestos Containing Building Materials be visually reinspected, reassessed, and touched to determine whether they have become friable since last inspection or reinspection. For each homogenous areas of newly friable material that is already assumed to be ACBM, bulk sample may be collected and submitted for analysis. A copy of the report shall be submitted to the Risk Manager for inclusion in th Asbestos Management Plan.

**Legend of acronyms and terms at end of table**

BUILDING AND FUNCTIONAL SPACE	HOMOGENEOUS MATERIAL NUMBER (HM#)	MATERIAL DESCRIPTION Friable (F), Nonfriable (NF), TSI (T), Surfacing (S), or Miscellaneous (M)		AHERA ASSESSMENT CATEGORY (1-7, X, None)	DATE ACBM REMOVED	COMMENTS
Portable Classroom 30	65	NF/M	Base Cove Adhesive (256 linear feet)	X	N/A	Assumed positive
Portable Classroom 30	66	F/M	Drywall and Joint Compound (2,600 sq.ft.)	5	N/A	Assumed to exist behind wood and fiberboard wall panels
Portable Classroom 30	68	F/M	2' x 4' Ceiling Panels (960 sq.ft.)	5	N/A	Panels are plastic coated fiberglass
Portable Classroom 30	*69	NF/M	Carpet, Blue and Adhesive (900 sq.ft.)	X	N/A	Assumed positive
<b>*Note: HM# 69 is a new material that was added during the January 2017 inspection.</b>						

**LEGEND**

F = Friable, NF = Nonfriable, VFT = Vinyl Floor Tile, NA = Not Applicable; Material Categories: S = Surfacing, M = Miscellaneous, T = Thermal System Insulation (TSI), HM = Homogenous Materials

**AHERA Assessment Category**

- 1 = Damaged or Significantly Damaged TSI ACBM
- 2 = Damaged Friable Surfacing ACBM
- 3 = Significantly Damaged Friable Surfacing ACBM
- 4 = Damaged or Significantly Damaged Friable Miscellaneous ACBM

- 5 = Friable ACBM with Potential for Damage
- 6 = Friable ACBM with Potential for Significant Damage
- 7 = Any other Friable ACBM or Suspect ACBM,
- X = Not applicable (material is nonfriable surfacing or miscellaneous material)

None = no assessment category, material has been removed



District: Dixon Unified School District  
 School Name: Dixon Montessori Charter School  
 Building(s): Portable Classroom 31  
 Field Surveyor: Richard Casey  
 Surveillance Date: October 12, 2020

## AHERA: Triennial Reinspection Report

**Note: AHERA Reinspection has been completed in accordance with AHERA Rule 40 CFR Part 763.85(b)**

40 CFR Part 763.85 (b) requires all Asbestos Containing Building Materials and Suspect Asbestos Containing Building Materials be visually reinspected, reassessed, and touched to determine whether they have become friable since last inspection or reinspection. For each homogenous areas of newly friable material that is already assumed to be ACBM, bulk sample may be collected and submitted for analysis. A copy of the report shall be submitted to the Risk Manager for inclusion in th Asbestos Management Plan.

Legend of acronyms and terms at end of table

BUILDING AND FUNCTIONAL SPACE	HOMOGENEOUS MATERIAL NUMBER (HM#)	MATERIAL DESCRIPTION Friable (F), Nonfriable (NF), TSI (T), Surfacing (S), or Miscellaneous (M)		AHERA ASSESSMENT CATEGORY (1-7, X, None)	DATE ACBM REMOVED	COMMENTS
Portable Classroom 31	1	F/M	2' x 4' Ceiling Tile Textured Pinholes (980 sq.ft.)	5	N/A	Assumed positive
Portable Classroom 31	2	F/M	Vinyl Covered Drywall (1280 sq.ft.)	5	N/A	Assumed positive
Portable Classroom 31	3	NF/M	4" Base Cove Adhesive, Brown (125 linear feet)	X	N/A	Assumed positive
Portable Classroom 31	4	NF/M	Carpet (Brown) and Adhesive (1,280 sq.ft.)	X	N/A	Assumed positive
Portable Classroom 31	5	F/S	Drywall, Textured (approx 400 sq.ft.)	5	N/A	Assumed positive
Portable Classroom 31	6	NF/M	Sink Undercoat, Gray (2 sq.ft.)	X	N/A	Assumed positive
<b>*Note: Portable 31 was added during the January 2017 inspection</b>						

**LEGEND**

F = Friable, NF = Nonfriable, VFT = Vinyl Floor Tile, NA = Not Applicable; Material Categories: S = Surfacing, M = Miscellaneous, T = Thermal System Insulation (TSI), HM = Homogenous Materials

**AHERA Assessment Category**

1 = Damaged or Significantly Damaged TSI ACBM  
 2 = Damaged Friable Surfacing ACBM  
 3 = Significantly Damaged Friable Surfacing ACBM  
 4 = Damaged or Significantly Damaged Friable Miscellaneous ACBM

5 = Friable ACBM with Potential for Damage  
 6 = Friable ACBM with Potential for Significant Damage  
 7 = Any other Friable ACBM or Suspect ACBM,  
 X = Not applicable (material is nonfriable surfacing or miscellaneous material)

None = no assessment category, material has been removed





District: Dixon Unified School District  
 School Name: Dixon Montessori Charter School  
 Building(s): Portable Classroom 32  
 Field Surveyor: Richard Casey  
 Surveillance Date: October 12, 2020

## AHERA: Triennial Reinspection Report

**Note: AHERA Reinspection has been completed in accordance with AHERA Rule 40 CFR Part 763.85(b)**

40 CFR Part 763.85 (b) requires all Asbestos Containing Building Materials and Suspect Asbestos Containing Building Materials be visually reinspected, reassessed, and touched to determine whether they have become friable since last inspection or reinspection. For each homogenous areas of newly friable material that is already assumed to be ACBM, bulk sample may be collected and submitted for analysis. A copy of the report shall be submitted to the Risk Manager for inclusion in th Asbestos Management Plan.

Legend of acronyms and terms at end of table

BUILDING AND FUNCTIONAL SPACE	HOMOGENEOUS MATERIAL NUMBER (HM#)	MATERIAL DESCRIPTION Friable (F), Nonfriable (NF), TSI (T), Surfacing (S), or Miscellaneous (M)		AHERA ASSESSMENT CATEGORY (1-7, X, None)	DATE ACBM REMOVED	COMMENTS
Portable Classroom 32	1	F/M	2' x 4' Ceiling Tile Textured Pinholes (980 sq.ft.)	5	N/A	Assumed
Portable Classroom 32	2	F/M	Vinyl Covered Drywall (1,280 sq.ft.)	5	N/A	Assumed
Portable Classroom 32	3	NF/M	4" Base Cove Adhesive, Brown (125 linear feet)	X	N/A	Assumed
Portable Classroom 32	4	NF/M	Carpet (Brown) and Adhesive (1,280 sq.ft.)	X	N/A	Assumed
Portable Classroom 32	5	NF/M	Sink Undercoat, Gray (2 sq.ft.)	X	N/A	Assumed
<b>*Note: Portable 32 was added during the January 2017 inspection</b>						

**LEGEND**

F = Friable, NF = Nonfriable, VFT = Vinyl Floor Tile, NA = Not Applicable; Material Categories: S = Surfacing, M = Miscellaneous, T = Thermal System Insulation (TSI), HM = Homogenous Materials

**AHERA Assessment Category**

1 = Damaged or Significantly Damaged TSI ACBM  
 2 = Damaged Friable Surfacing ACBM  
 3 = Significantly Damaged Friable Surfacing ACBM  
 4 = Damaged or Significantly Damaged Friable Miscellaneous ACBM

5 = Friable ACBM with Potential for Damage  
 6 = Friable ACBM with Potential for Significant Damage  
 7 = Any other Friable ACBM or Suspect ACBM,  
 X = Not applicable (material is nonfriable surfacing or miscellaneous material)

None = no assessment category, material has been removed



District: Dixon Unified School District  
 School Name: Dixon Montessori Charter School  
 Building(s): Portable Classroom 33  
 Field Surveyor: Richard Casey  
 Surveillance Date: October 12, 2020

## AHERA: Triennial Reinspection Report

**Note: AHERA Reinspection has been completed in accordance with AHERA Rule 40 CFR Part 763.85(b)**

40 CFR Part 763.85 (b) requires all Asbestos Containing Building Materials and Suspect Asbestos Containing Building Materials be visually reinspected, reassessed, and touched to determine whether they have become friable since last inspection or reinspection. For each homogenous areas of newly friable material that is already assumed to be ACBM, bulk sample may be collected and submitted for analysis. A copy of the report shall be submitted to the Risk Manager for inclusion in the Asbestos Management Plan.

Legend of acronyms and terms at end of table

BUILDING AND FUNCTIONAL SPACE	HOMOGENEOUS MATERIAL NUMBER (HM#)	MATERIAL DESCRIPTION Friable (F), Nonfriable (NF), TSI (T), Surfacing (S), or Miscellaneous (M)		AHERA ASSESSMENT CATEGORY (1-7, X, None)	DATE ACBM REMOVED	COMMENTS
Portable Classroom 33	1	F/M	2' x 4' Ceiling Tile Textured Pinholes (980 sq.ft.)	5	N/A	Assumed positive
Portable Classroom 33	2	F/M	Vinyl Covered Drywall (1 280 sq.ft.)	5	N/A	Assumed positive
Portable Classroom 33	3	NF/M	4" Base Cove Adhesive, Green (125 linear feet)	X	N/A	Assumed positive
Portable Classroom 33	4	NF/M	Carpet (Black) and Adhesive (1,280 sq.ft.)	X	N/A	Assumed positive
Portable Classroom 33	5	NF/M	12" x 12" Vinyl Floor Tile (Blue) and Adhesive (84 sq.ft.)	X	N/A	Assumed positive
Portable Classroom 33	6	NF/M	Sink Undercoat, Gray (2 sq.ft.)	X	N/A	Assumed positive
<b>*Note: Portable 33 was added during the January 2017 inspection</b>						

**LEGEND**

F = Friable, NF = Nonfriable, VFT = Vinyl Floor Tile, NA = Not Applicable; Material Categories: S = Surfacing, M = Miscellaneous, T = Thermal System Insulation (TSI), HM = Homogenous Materials

**AHERA Assessment Category**

1 = Damaged or Significantly Damaged TSI ACBM  
 2 = Damaged Friable Surfacing ACBM  
 3 = Significantly Damaged Friable Surfacing ACBM  
 4 = Damaged or Significantly Damaged Friable Miscellaneous ACBM

5 = Friable ACBM with Potential for Damage  
 6 = Friable ACBM with Potential for Significant Damage  
 7 = Any other Friable ACBM or Suspect ACBM,  
 X = Not applicable (material is nonfriable surfacing or miscellaneous material)

None = no assessment category, material has been removed



District: Dixon Unified School District  
 School Name: Dixon Montessori Charter School  
 Building(s): Portable Classroom 34  
 Field Surveyor: Richard Casey  
 Surveillance Date: October 12, 2020

## AHERA: Triennial Reinspection Report

**Note: AHERA Reinspection has been completed in accordance with AHERA Rule 40 CFR Part 763.85(b)**

40 CFR Part 763.85 (b) requires all Asbestos Containing Building Materials and Suspect Asbestos Containing Building Materials be visually reinspected, reassessed, and touched to determine whether they have become friable since last inspection or reinspection. For each homogenous areas of newly friable material that is already assumed to be ACBM, bulk sample may be collected and submitted for analysis. A copy of the report shall be submitted to the Risk Manager for inclusion in th Asbestos Management Plan.

**Legend of acronyms and terms at end of table**

BUILDING AND FUNCTIONAL SPACE	HOMOGENEOUS MATERIAL NUMBER (HM#)	MATERIAL DESCRIPTION Friable (F), Nonfriable (NF), TSI (T), Surfacing (S), or Miscellaneous (M)		AHERA ASSESSMENT CATEGORY (1-7, X, None)	DATE ACBM REMOVED	COMMENTS
Portable Classroom 34	1	F/M	2' x 4' Ceiling Tile Textured Pinholes (980 sq.ft.)	5	N/A	Assumed positive
Portable Classroom 34	2	F/M	Vinyl Covered Drywall (1,280 sq.ft.)	5	N/A	Assumed positive
Portable Classroom 34	3	NF/M	4" Base Cove Adhesive, Brown (125 linear feet)	X	N/A	Assumed positive
Portable Classroom 34	4	NF/M	Carpet (Brown) and Adhesive (1,280 sq.ft.)	X	N/A	Assumed positive
Portable Classroom 34	5	NF/M	Sink Undercoat, Gray (2 sq.ft.)	X	N/A	Assumed positive
<b>*Note: Portable 34 was added during the January 2017 inspection</b>						

**LEGEND**  
 F = Friable, NF = Nonfriable, VFT = Vinyl Floor Tile, NA = Not Applicable; Material Categories: S = Surfacing, M = Miscellaneous, T = Thermal System Insulation (TSI), HM = Homogenous Materials

**AHERA Assessment Category**

- |  |  |
|--|--|
| 1 = Damaged or Significantly Damaged TSI ACBM<br>2 = Damaged Friable Surfacing ACBM<br>3 = Significantly Damaged Friable Surfacing ACBM<br>4 = Damaged or Significantly Damaged Friable Miscellaneous ACBM | 5 = Friable ACBM with Potential for Damage<br>6 = Friable ACBM with Potential for Significant Damage<br>7 = Any other Friable ACBM or Suspect ACBM,<br>X = Not applicable (material is nonfriable surfacing or miscellaneous material) |
|--|--|
- None = no assessment category, material has been removed



District: Dixon Unified School District  
 School Name: Dixon Montessori Charter School  
 Building(s): Portable Classroom 35  
 Field Surveyor: Richard Casey  
 Surveillance Date: October 12, 2020

## AHERA: Triennial Reinspection Report

**Note: AHERA Reinspection has been completed in accordance with AHERA Rule 40 CFR Part 763.85(b)**

40 CFR Part 763.85 (b) requires all Asbestos Containing Building Materials and Suspect Asbestos Containing Building Materials be visually reinspected, reassessed, and touched to determine whether they have become friable since last inspection or reinspection. For each homogenous areas of newly friable material that is already assumed to be ACBM, bulk sample may be collected and submitted for analysis. A copy of the report shall be submitted to the Risk Manager for inclusion in th Asbestos Management Plan.

Legend of acronyms and terms at end of table

BUILDING AND FUNCTIONAL SPACE	HOMOGENEOUS MATERIAL NUMBER (HM#)	MATERIAL DESCRIPTION		AHERA ASSESSMENT CATEGORY (1-7, X, None)	DATE ACBM REMOVED	COMMENTS
		Friable (F), Nonfriable (NF), TSI (T), Surfacing (S), or Miscellaneous (M)				
Portable Classroom 35	1	F/M	2' x 4' Ceiling Tile Textured Pinholes (980 sq.ft.)	5	N/A	Assumed positive
Portable Classroom 35	2	F/M	Vinyl Covered Drywall (1,280 sq.ft.)	5	N/A	Assumed positive
Portable Classroom 35	3	NF/M	4" Base Cove Adhesive, Green (125 linear feet)	X	N/A	Assumed positive
Portable Classroom 35	4	NF/M	Carpet (Black) and Adhesive (1,280 sq.ft.)	X	N/A	Assumed positive
Portable Classroom 35	5	NF/M	12" x 12" Vinyl Floor Tile (Blue) and Adhesive (84 sq.ft.)	X	N/A	Assumed positive
Portable Classroom 35	6	NF/M	Sink Undercoat, Gray (2 sq.ft.)	X	N/A	Assumed positive
<b>*Note: Portable 35 was added during the January 2017 inspection</b>						

**LEGEND**

F = Friable, NF = Nonfriable, VFT = Vinyl Floor Tile, NA = Not Applicable; Material Categories: S = Surfacing, M = Miscellaneous, T = Thermal System Insulation (TSI), HM = Homogenous Materials

**AHERA Assessment Category**

1 = Damaged or Significantly Damaged TSI ACBM  
 2 = Damaged Friable Surfacing ACBM  
 3 = Significantly Damaged Friable Surfacing ACBM  
 4 = Damaged or Significantly Damaged Friable Miscellaneous ACBM

5 = Friable ACBM with Potential for Damage  
 6 = Friable ACBM with Potential for Significant Damage  
 7 = Any other Friable ACBM or Suspect ACBM,  
 X = Not applicable (material is nonfriable surfacing or miscellaneous material)

None = no assessment category, material has been removed



District: Dixon Unified School District  
 School Name: Dixon Montessori Charter School  
 Building(s): Portable Classroom 36  
 Field Surveyor: Richard Casey  
 Surveillance Date: October 12, 2020

## AHERA: Triennial Reinspection Report

**Note: AHERA Reinspection has been completed in accordance with AHERA Rule 40 CFR Part 763.85(b)**

40 CFR Part 763.85 (b) requires all Asbestos Containing Building Materials and Suspect Asbestos Containing Building Materials be visually reinspected, reassessed, and touched to determine whether they have become friable since last inspection or reinspection. For each homogenous areas of newly friable material that is already assumed to be ACM, bulk sample may be collected and submitted for analysis. A copy of the report shall be submitted to the Risk Manager for inclusion in the Asbestos Management Plan.

[Legend of acronyms and terms at end of table](#)

BUILDING AND FUNCTIONAL SPACE	HOMOGENEOUS MATERIAL NUMBER (HM#)	MATERIAL DESCRIPTION Friable (F), Nonfriable (NF), TSI (T), Surfacing (S), or Miscellaneous (M)		AHERA ASSESSMENT CATEGORY (1-7, X, None)	DATE ACBM REMOVED	COMMENTS
Portable Classroom 36	1	F/M	2 'x 4' Ceiling Tile Textured Pinholes (980 sq.ft.)	5	N/A	Assumed positive
Portable Classroom 36	2	F/M	Vinyl Covered Drywall (1,280 sq.ft.)	5	N/A	Assumed positive
Portable Classroom 36	3	NF/M	4" Base Cove Adhesive, Brown (125 linear feet)	X	N/A	Assumed positive
Portable Classroom 36	4	NF/M	Sink Undercoat Cream (2 sq.ft)	X	N/A	Assumed positive
Portable Classroom 36	5	NF/M	Carpet (Brown) and Adhesive (1,280 sq.ft.)	X	N/A	Assumed positive
<b>*Note: Portable 36 was added during the January 2017 inspection</b>						

**LEGEND**

F = Friable, NF = Nonfriable, VFT = Vinyl Floor Tile, NA = Not Applicable; Material Categories: S = Surfacing, M = Miscellaneous, T = Thermal System Insulation (TSI), HM = Homogenous Materials

**AHERA Assessment Category**

- |   |   |  |
|---|---|--|
| 1 = Damaged or Significantly Damaged TSI ACMB                   | 5 = Friable ACMB with Potential for Damage                                      | None = no assessment category, material has been removed |
| 2 = Damaged Friable Surfacing ACMB                              | 6 = Friable ACMB with Potential for Significant Damage                          |  |
| 3 = Significantly Damaged Friable Surfacing ACMB                | 7 = Any Other Friable ACMB or Suspect ACMB                                      |  |
| 4 = Damaged or Significantly Damaged Friable Miscellaneous ACMB | X = Not Applicable (material is nonfriable surfacing or miscellaneous material) |  |



District: Dixon Unified School District  
 School Name: Dixon Montessori Charter School  
 Building(s): Portable Classroom 37  
 Field Surveyor: Richard Casey  
 Surveillance Date: October 12, 2020

## AHERA: Triennial Reinspection Report

**Note: AHERA Reinspection has been completed in accordance with AHERA Rule 40 CFR Part 763.85(b)**

40 CFR Part 763.85 (b) requires all Asbestos Containing Building Materials and Suspect Asbestos Containing Building Materials be visually reinspected, reassessed, and touched to determine whether they have become friable since last inspection or reinspection. For each homogenous areas of newly friable material that is already assumed to be ACBM, bulk sample may be collected and submitted for analysis. A copy of the report shall be submitted to the Risk Manager for inclusion in th Asbestos Management Plan.

**Legend of acronyms and terms at end of table**

BUILDING AND FUNCTIONAL SPACE	HOMOGENEOUS MATERIAL NUMBER (HM#)	MATERIAL DESCRIPTION		AHERA ASSESSMENT CATEGORY (1-7, X, None)	DATE ACBM REMOVED	COMMENTS
		Friable (F), Nonfriable (NF), TSI (T), Surfacing (S), or Miscellaneous (M)				
Portable Classroom 37	69	NF/M	12" Vinyl Floor Tile (Beige Mottled) and Adhesive (2,500 sq.ft.)	X	N/A	Assumed positive, tiles are loose
Kitchen, Sink Area, Restroom	70	NF/M	Sheet Vinyl Flooring (Beige) and Adhesive (450 sq.ft.)	X	N/A	Assumed positive
Portable Classroom 37	71	NF/M	Base Cove Adhesive (350 sq.ft.)	X	N/A	Assumed positive
Portable Classroom 37	72	F/M	Drywall and Joint Compound (4,000 sq.ft.)	5	N/A	Assumed to exist behind wood and fiberboard wall panels.
Small Side Play Room	73	F/S	Drywall - Textured (300 sq.ft.)	None	N/A	Non Detect, samples collected ECG 3/7/13
Portable Classroom 37	74	F/M	2 'x 4' Ceiling Panels (2,500 sq.ft.)	5	N/A	Panels are plastic-coated fiberglass
<b>*Note: Materials assumed to be the same from previous report. Portable Classroom 37 is not being used.</b>						

**LEGEND**

F = Friable, NF = Nonfriable, VFT = Vinyl Floor Tile, NA = Not Applicable; Material Categories: S = Surfacing, M = Miscellaneous, T = Thermal System Insulation (TSI), HM = Homogenous Materials

**AHERA Assessment Category**

- |  |   |  |
|--|---|--|
| 1 = Damaged or Significantly Damaged TSI ACBM    | 5 = Friable ACBM with Potential for Damage                                      |  |
| 2 = Damaged Friable Surfacing ACBM               | 6 = Friable ACBM with Potential for Significant Damage                          | None = no assessment category, material has been removed |
| 3 = Significantly Damaged Friable Surfacing ACBM | 7 = Any Other Friable ACBM or Suspect ACBM                                      |  |
| 4 = Damaged or Significantly Samaged Friable     | X = Not Applicable (material is nonfriable surfacing or miscellaneous material) |  |